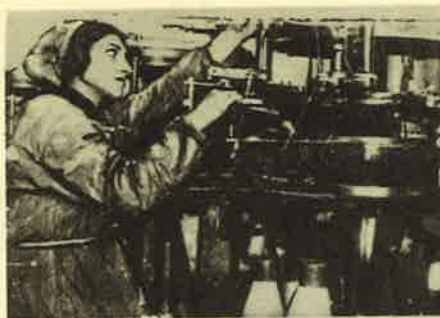


TRACTOR DRIVER, REPAIRING AGRICULTURAL MACHINERY
(Chapter IV)



JEWISH GIRL IN A KIEV TEXTILE FACTORY



IN THE SHOE FACTORY NAMED AFTER
KAGANOVICH IN CHARKOV



IN THE MECHANIZED GARMENT FACTORY
IN MINSK
JEWS IN INDUSTRY



JEWISH YOUTH IN THE KERSHEIVSK
METALLURGICAL PLANT

(Page 27)



A TYPE OF JEWISH FARMER, IN THE CRIMEA
(Page 62)



M. I. KALININ ADDRESSING THE SECOND CONGRESS OF THE JEWISH LAND
SETTLEMENT SOCIETY HELD IN MOSCOW IN DECEMBER, 1930
(Chapter I)



PROLETARIAN CHILDREN RALLY TO THE BANNERS OF THE FIRST OF MAY
(Chapter I)



THE NEW GOVERNMENT HOUSE IN MINSK
(Chapter I)



THE LENIN MONUMENT BEFORE THE NEWLY CON-
STRUCTED GOVERNMENT HOUSE AT MINSK
(Chapter I)



JEWS-LAND SETTLERS IN A BARRACK IN THE MIDST OF THE STEPPE
(Page 62)



DINNER IN THE FIELDS
(Chapter IV)



DELEGATES TO THE SECOND ALL-UNION CONGRESS OF
THE JEWISH COLONIZATION SOCIETY
(Page 92)



SECOND CONGRESS OF THE "OZET"
CRIMEAN DELEGATES EXAMINING THE EXHIBITION DEVOTED TO PRODUCTS OF
JEWISH LABOR ON LAND
(Chapter IV)



CHILDREN DANCING IN A RING, AROUND THE *melamed* AND HIS WIFE—
THE OLDEST MEMBERS OF THE COLLECTIVE
(*Chapter IV*)



AN OLD MEMBER OF A JEWISH COLLECTIVE FARM AT WORK IN THE FIELD
(Page 63)



THE BUILDING OF A JEWISH VILLAGE IN THE KHERSON DISTRICT
(Page 69)



LEARNING TO USE THE TRACTOR
(Chapter IV)



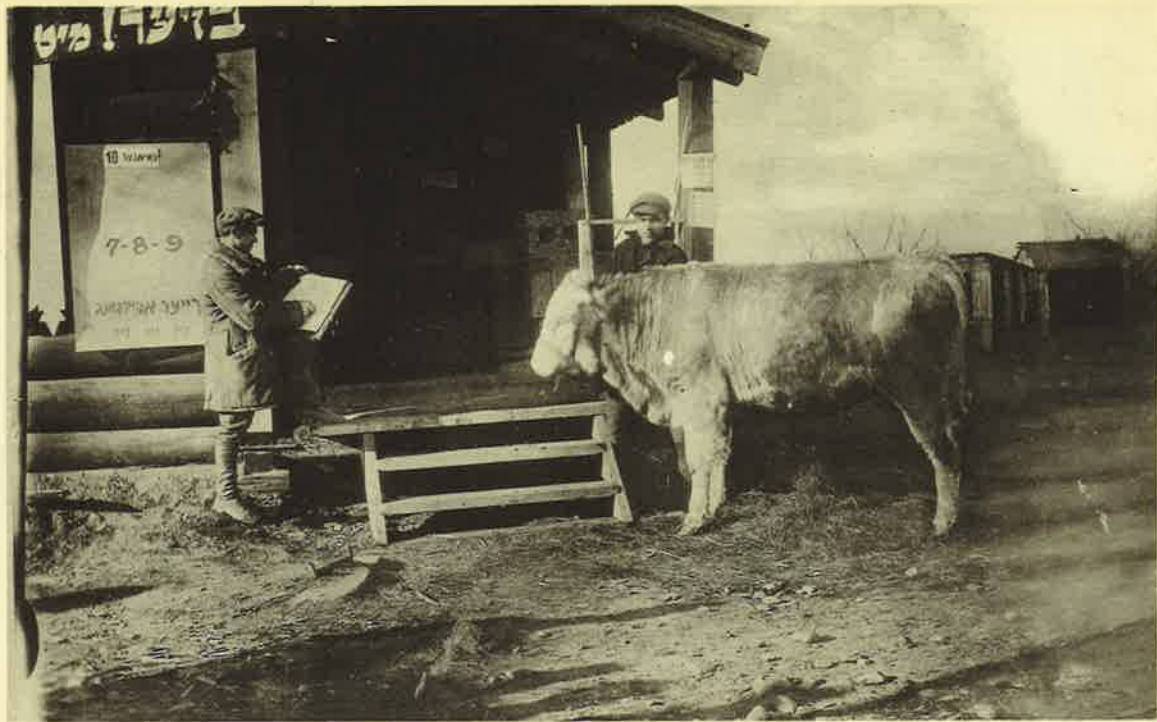
SHOCK BRIGADIER
(Page 92)



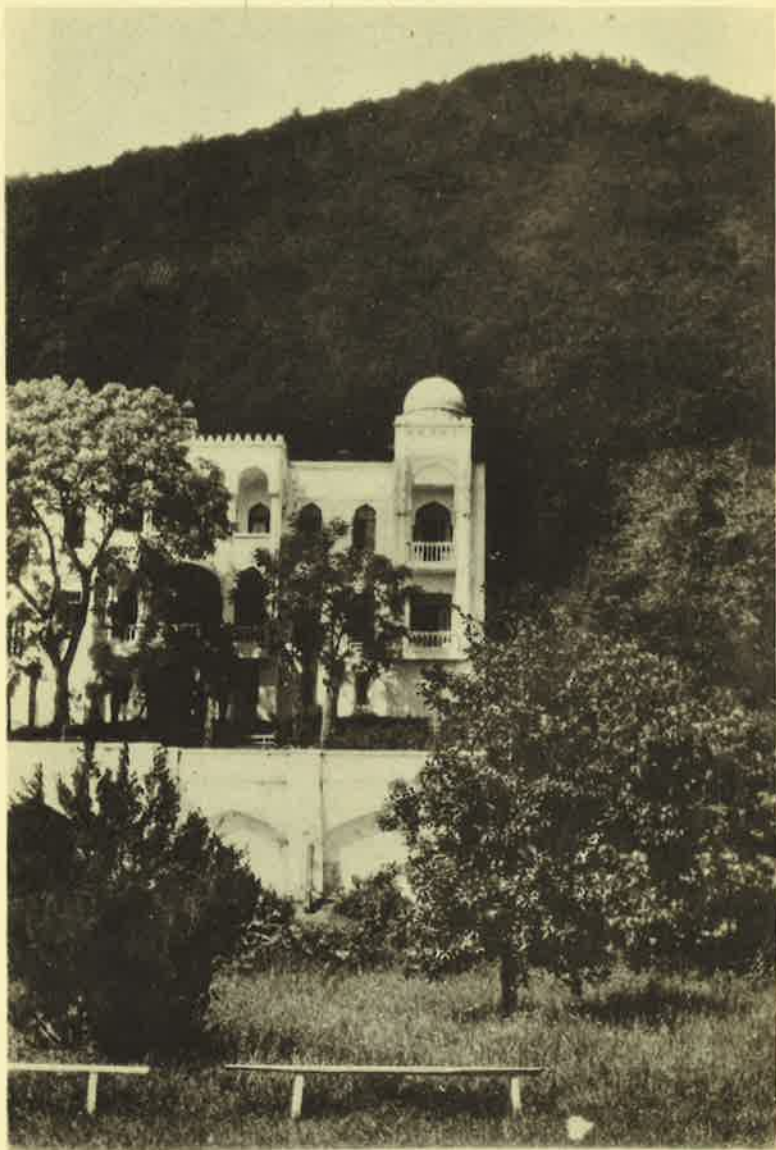
HERDSWOMAN, KOMSOMOL MEMBER, READING *The Shtern*
(Chapter VI)



SHOCKWORKER, WRITING THE NAME OF THE LAZY ON THE BLACKBOARD
(Page 105)



EXHIBITION IN BIZAFELD, BIRO-BIDJAN
(Chapter XIV)



THE FORMER TSAR'S PALACE IN LEVADIA, CRIMEA—
NOW A WORKERS' REST HOME
(Page 121)



YOUTH ON A HOLIDAY AT YALTA
(Chapter IX)



THE "MONK" AND "DIVA" ROCKS—THE CRIMEA
(Page 119)



YALTA, ON THE SHORE OF THE BLACK SEA—WORKERS' HEALTH RESORT
(Page 121)



YOUNG WORKERS AT THE CLUB
(Page 133)



AN OLD MOUNTAIN-JEW ON HIS WAY TO THE SYNAGOGUE, ON THE SABBATH
(*Page 126*)



THE ROCKS OF GURZUN, WHERE RUSSIA'S GREAT POET,
PUSHKIN, LIVED IN EXILE
(Chapter XII)



TRAVELLING LIBRARY
(Chapter XII)



S. MICHOELS
DIRECTOR OF THE JEWISH STATE THEATRE OF MOSCOW
(Page 167)



MOSCOW JEWISH STATE THEATRE
"THE SORCERESS": SETTINGS BY RABINOVITCH
(Page 173)



THE DRAMATIC CIRCLE AT REHEARSAL IN THE COLLECTIVE
(Chapter VII)



MOSCOW JEWISH STATE THEATRE
"AT NIGHT": SETTINGS BY FALK
(*Page 175*)



MOSCOW JEWISH STATE THEATRE
"TWO HUNDRED THOUSAND": SETTINGS BY RABITCHEV
(Chapter XIII)